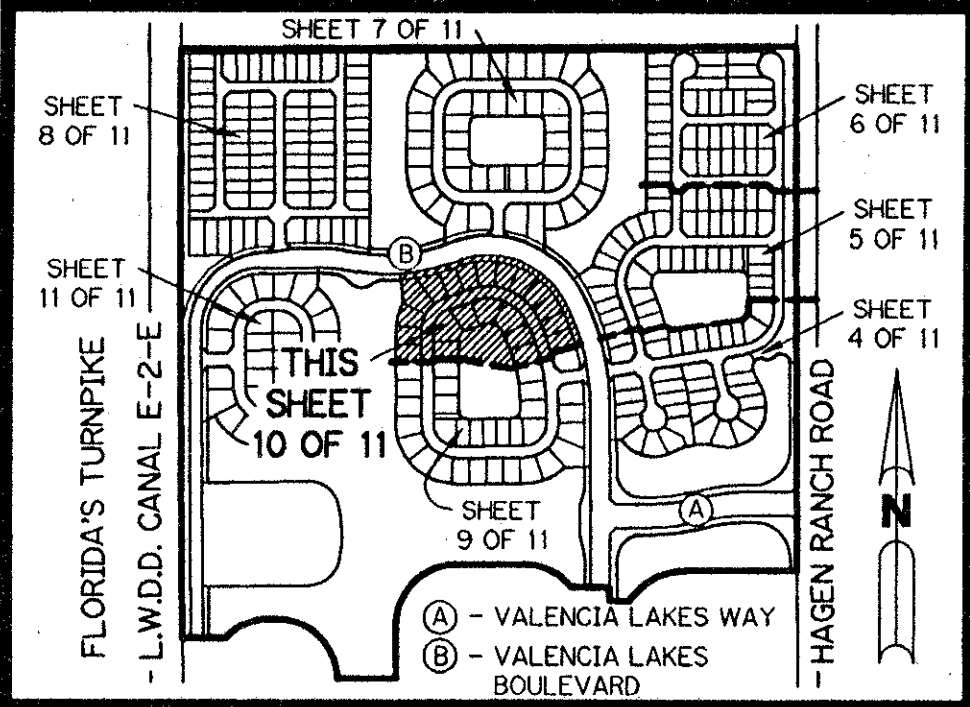


A PLANNED UNIT DEVELOPMENT

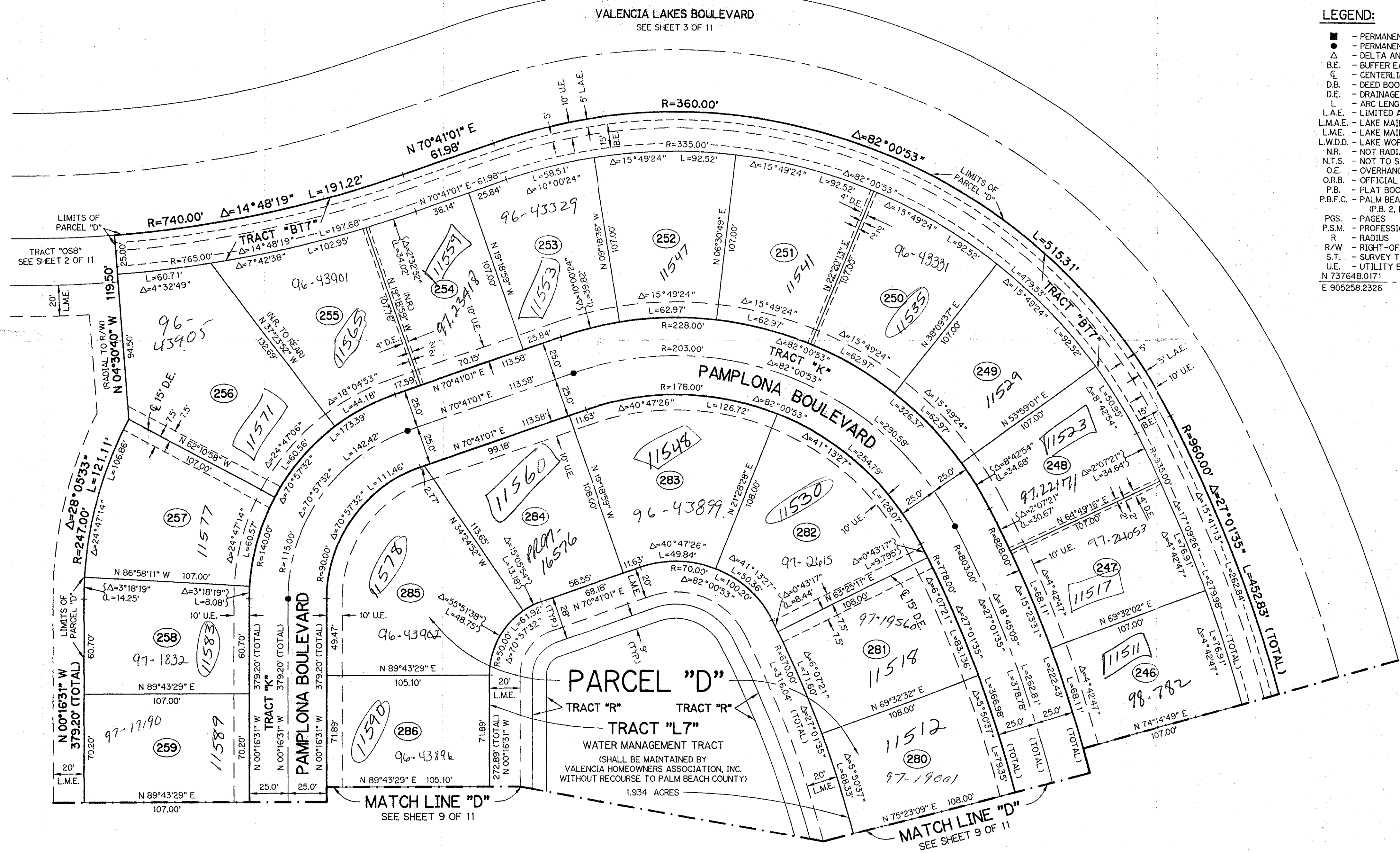
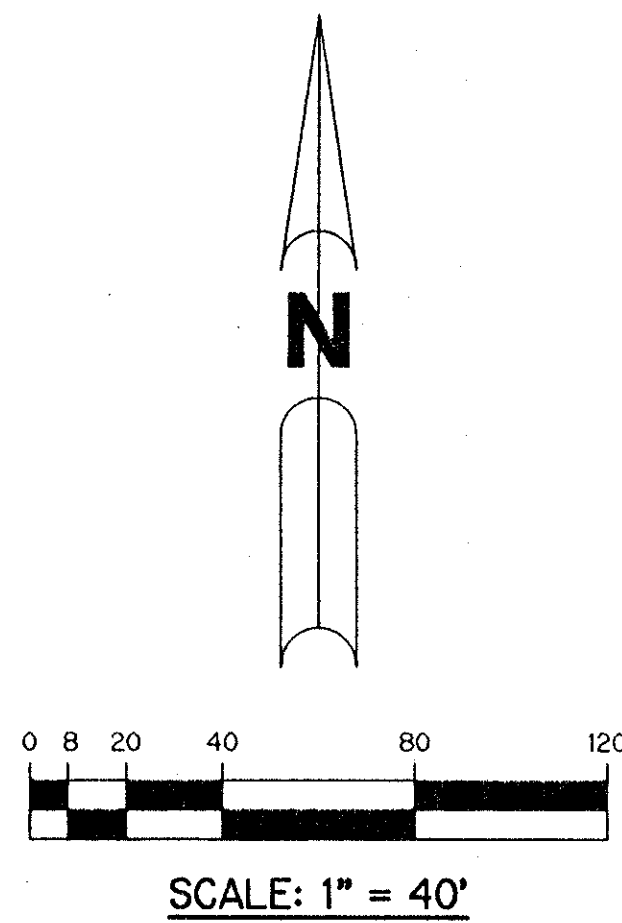
VALENCIA LAKES - PLAT ONE

BEING A REPLAT OF ALL OF TRACTS 42, 43, 44, 45, 46, 47, 50, 51, 52, 53, 54, 55, 74, 75, 76, 77, 78, AND 79 AND A PORTION OF TRACTS 41, 48, 49, 56, 73, 80, 81, 82, 83, 84, 85, 86, 87, AND 88 AND ASSOCIATED ABANDONED RIGHT-OF-WAY ALL IN BLOCK 58 ACCORDING TO THE PLAT OF PALM BEACH FARMS COMPANY PLAT NO. 3, AS RECORDED IN PLAT BOOK 2, PAGES 45 THROUGH 54, INCLUSIVE, OF THE PUBLIC RECORDS OF PALM BEACH COUNTY, FLORIDA. LYING IN SECTION 33, TOWNSHIP 45 SOUTH, RANGE 42 EAST.

SHEET 10 OF 11 FEBRUARY, 1996



KEY MAP
N.T.S.



- LEGEND:**
- - PERMANENT REFERENCE MONUMENT, PSM #4213
 - - PERMANENT CONTROL POINT, PSM #4213
 - Δ - DELTA ANGLE
 - B.E. - BUFFER EASEMENT
 - C - CENTERLINE
 - D.B. - DEED BOOK
 - D.E. - DRAINAGE EASEMENT
 - L - ARC LENGTH
 - L.A.E. - LIMITED ACCESS EASEMENT
 - L.M.A.E. - LAKE MAINTENANCE ACCESS EASEMENT
 - L.M.E. - LAKE MAINTENANCE EASEMENT
 - L.W.D.D. - LAKE WORTH DRAINAGE DISTRICT
 - N.R. - NOT RADIAL
 - N.T.S. - NOT TO SCALE
 - O.E. - OVERHANG EASEMENT
 - O.R.B. - OFFICIAL RECORD BOOK
 - P.B. - PLAT BOOK
 - P.B.F.C. - PALM BEACH FARMS COMPANY PLAT NO. 3 (P.B. 2, PGS. 45-54)
 - PGS. - PAGES
 - P.S.M. - PROFESSIONAL SURVEYOR AND MAPPER
 - R - RADIUS
 - R/W - RIGHT-OF-WAY
 - S.T. - SURVEY TIE
 - U.E. - UTILITY EASEMENT
 - N 737648.0171 - DENOTES STATE PLANE COORDINATES
 - E 905258.2326

Pet - 95-40
No schools
Restriction Covenant
Roads 1320' BEFORE 12/1/97
5/3/3/K
Roads \$1452' AFTER 12/1/97

78-22

BOOK 78
PAGE 22
FLOOD ZONE A1
FLOOD MAP # 2004
QUAD # 50
SE 95-40
PUB NAME Valencia Lakes
ZIP CODE 33437

THIS INSTRUMENT PREPARED BY
PERRY C. WHITE, P.S.M. 4213, STATE OF FLORIDA
LAWSON, NOBLE AND WEBB, INC.
ENGINEERS PLANNERS SURVEYORS
WEST PALM BEACH, FLORIDA

0662-001